



JLR VCI Wiring Harness Replacement Procedure for JLR VCI - JLR00001

JLR VCI Replacement Cable – DAPN0093



DAPN0093 Replacement Cable

- 1) Read these instructions in full before disassembling the JLR VCI.
- 2) Tools required are a Pozidriv® screwdriver and plastic trim tool.
- 3) Remove four screws from the back-side of the JLR VCI that secure the rubber end-covers to the JLR VCI.
- 4) Using a plastic trim tool on the rear side of the VCI, raise the rubber end-cover as shown and remove both rubber end-covers. Place the plastic trim tool near each screw hole to assist with disengaging the rubber end-covers. Refer to photo 1.



Photo 1

Note: The rubber end-covers have tabs that lock the end-covers into the JLR VCI. The rubber end-covers need to be slightly raised to disconnect the end-cover tabs from the JLR VCI. Both rubber end-covers are identical and interchangeable. Refer to photo 2.



Photo 2.

Plastic case will now split into two. Remove the top end-cover (JLR VCI logo side).

- 5) Note the circuit board positioning and remove the circuit board. Refer to photo 3.



Photo 3

- 6) Remove the circuit board from the lower half of the case by lifting the board from the end opposite of the cable.
- 7) Before removing the connector from the circuit board **fully read the next two steps**. Note the connector positioning and note wire colors as the connector **“is not”** unique and can be installed improperly. Note the wire colors in reference to the circuit board identification. The brown wire of the circuit board should be plugged into pin number 1 of the circuit board. Refer to photo 4.

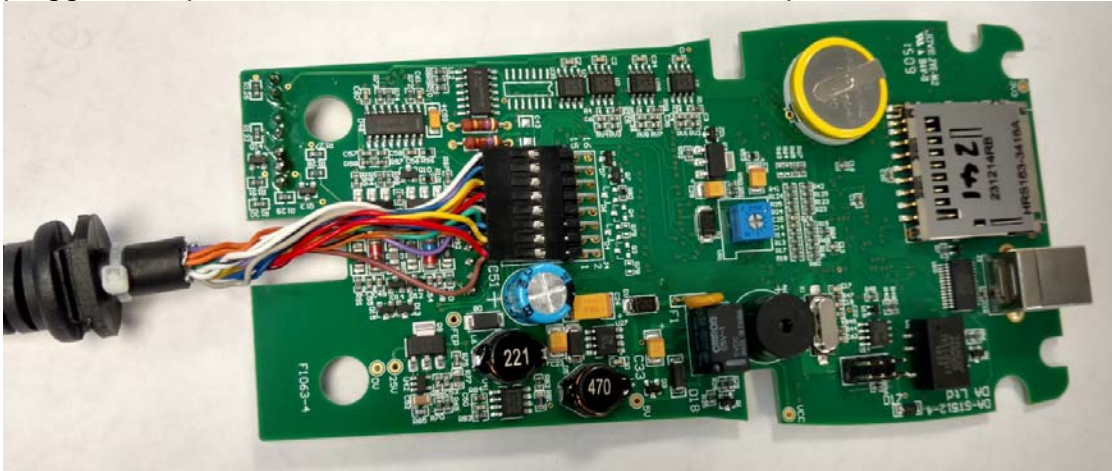


Photo 4

- 8) There are connectors on both sides of the circuit board and the new wiring harness DAPN0093 connector can be installed and accidentally plugged into either side of the circuit board connector. Note the side of the circuit board the connector plugs into and the connector positioning and color identification for new wiring harness/connector DAPN0093 assembly. There is a small arrow on the wire harness connector (circuit board side of connector) at the brown wire and this side of the connector should be positioned on the circuit board side (connects to pin 1 on the circuit board). Refer to Photo 5 for arrow identification.

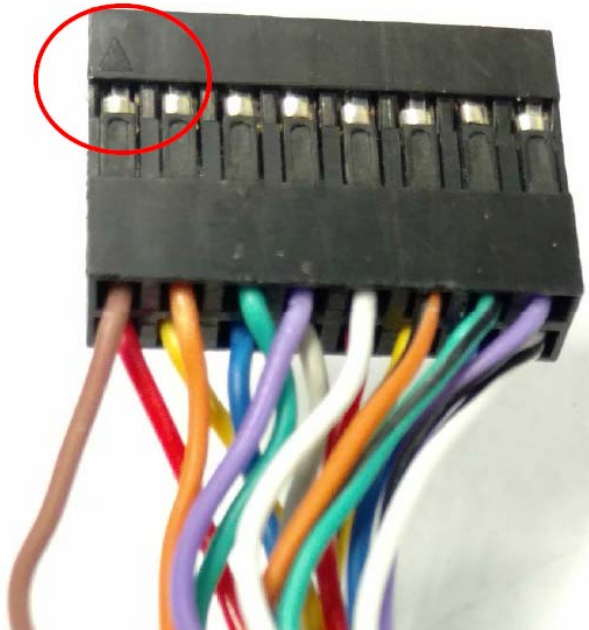


Photo 5

- 9) Carefully remove the connector from the circuit board.
- 10) Using the new wiring harness part number DAPN0093; connect new wiring harness connector to the circuit board. There is an arrow on the cable connector. This arrow should be closest to the circuit board. Arrow (brown wire) aligns with circuit board pin number 1.
- 11) When installing the circuit board into the lower half of the case, note positioning of the case seal as there is a flat side a rounded side. The rounded side fits into the lower portion of the case.
- 12) Position the circuit board into the lower half of the case (will only fit one way with connector side into the lower half of the case. Note positioning of the case seal as there is a flat side a rounded side. The rounded side fits into the lower portion of the case.
- 13) Install the top half (JLR branded half) of the VCI case.
- 14) Reinstall the rubber end-covers and secure with the four screws previously removed.

Updated 6/10/2016